

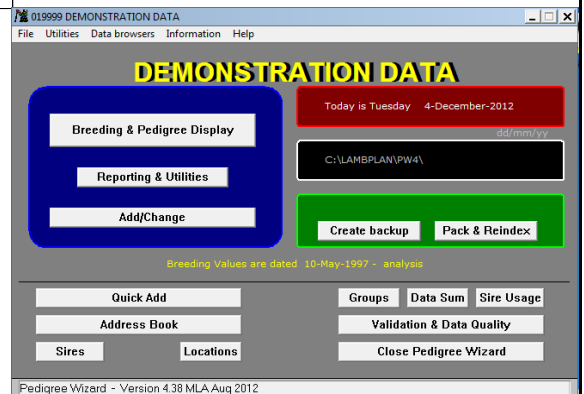
Pedigree Wizard 4 - Add new Sheep to PW

Task

Description

Screenshot

Introduction - How to add sheep that are new to Pedigree Wizard.

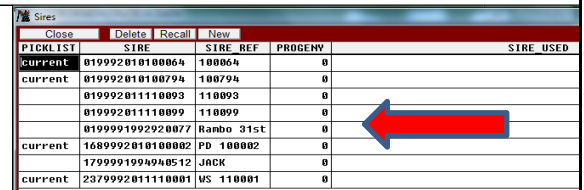


A

Preparation

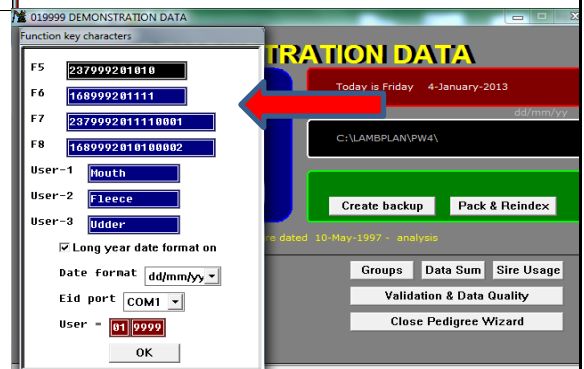
A1

See PW Video 3 - How to "Set up annual preferences". In the "Sires" list, ensure all sires for the sheep to be added are there and have current next to them in the picklist column. Make blank the picklist column for sires that will not be used.



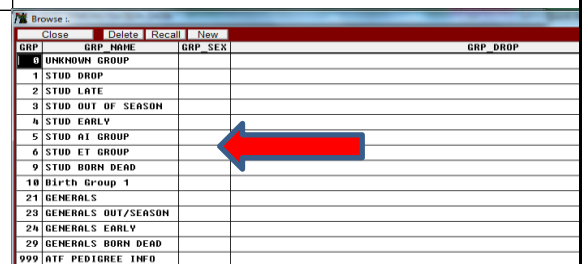
A2

Set up the function keys as appropriate, to save time and minimize your keystrokes.



A3

Ensure the appropriate management groups are available.



<p>A4</p>	<p>See PW Video 2 - How to "Set up Initial Preferences". Ensure the Breed code and Flock number are correct.</p>	
<p>B</p>	<p>Add Sheep</p>	
<p>B1</p>	<p>Can add sheep via "Add/Change" or "Quick Add". In this case we are going to use "Quick Add" as more information can be added at the one time. From the home screen click on the "Quick Add" button.</p>	
<p>B2</p>	<p>From the "Quick Add" screen, ensure the Prefix of the sheep you are entering is correct (to change, just click on it and type in the required information). When entering sheep that are new to the database, ignore the Test type, Info type and dates. If you wish to enter comments, ensure the "Include comments" box is ticked. Type in the management number of the sheep you are entering in the ID field (from 1 to 4 digits) and press enter.</p>	
<p>B3</p>	<p>As this is a new animal to the database an Alert box will appear, click on OK. (Note that the 16 digit ID number has been automatically generated.)</p>	

<p>B4</p>	<p>To enter the Sire and Dam, either click on "Sires current or Dams" and choose from the picklist or if the sire or dam was set up in a function key, press the appropriate function key. If the sire or dam is one of your own animals there is also the option to type in the last 6 digits of the 16 digit ID number and Auto Build will complete the rest when "Save" is clicked. The full 16 digit ID can also be typed in here for both the sire and dam.</p>	
<p>B5</p>	<p>Enter the sex, Bt, RT, DOB, Bwt (if Bwt is unknown leave as 0.0), Lambing Ease (if the ewes are checked daily use the appropriate fields 1 to 5, 0 is when the ewes are never checked), Conception method, Conception date (if known) and Group (click on the Group button and select). Click on Save.</p>	
<p>B6</p>	<p>To view the animals entered, from the home page, click on "Breeding and Pedigree Display".</p>	
<p>B7</p>	<p>Individual animals will be displayed here. To select another animal you can either click on the "Prev or Next" buttons, select another animal from the "Picklist" or press the "Page Up and Page Down" buttons on your keyboard. If there is an error in any of this information it can be updated in this screen. This is also the screen where an animals "status" can be changed.</p>	